



Mini C-arms

Dedicated to extremity imaging

Live image size

Expect exceptional diagnostic imagery with a 36.8 cm x 36.8 cm live image to see fine details of anatomy with vivid clarity



On-screen help

Description of common system functions available directly on-screen

32" monitor

With the largest screen on a mini C-arm, experience optimal eye comfort on a high-bright, 3,840 px x 2,160 px resolution monitor

Keyboard

Versatile and detachable, used to enter patient data and control essential system functions

Innovative imaging solutions for orthopedic surgeons. Orthoscan has been the leader in the mini C-arm market since 2002 with a worldwide installed base, and is committed to innovative digital imaging solutions for orthopedic surgeons in offices and clinical environments. Mini C-arms are the ideal solution for fluoroscopy of the extremities at minimized dose levels without sacrificing image quality. Orthoscan's TAU family are the first mini C-arms designed and approved for use with pediatric patients.



TAU 20|20



TAU 15|15



TAU 15|12



MOBILE DI

The superior choice in imaging

Upgrade your expectations

Exceptional imaging begins here

Portable diagnostic imaging

Imaging technology	Next generation flat-panel 20 cm x 20 cm	Next generation flat-panel 15 cm x 15 cm
Image resolution	2,000 x 2,000	1,500 x 1,500
Pixel spacing	100 microns	100 microns
Pulsed fluoroscopy	■	■
High-bright LCD monitor	32", optional 27"	27", optional 32"
Touchscreen	■	■
Bilateral sterile field controls	■	■
Stepless collimator	■	-
Optimized dose filter	■	■
Pediatric mode	■	■
160° orbital movement	■	■
Weight	215.5 kg	215.5 kg

Imaging technology	Next generation flat-panel 15 cm x 12 cm	Next generation flat-panel 15 cm x 12 cm
Image resolution	1,500 x 1,200	1,900 x 1,500
Pixel spacing	100 microns	75 microns
Pulsed fluoroscopy	-	-
High-bright LCD monitor	24", optional 27"	24"
Touchscreen	■	■
Bilateral sterile field controls	■	-
Stepless collimator	-	-
Optimized dose filter	■	-
Pediatric mode	■	-
160° orbital movement	■	-
Weight	215.5 kg	15.9 kg

available ■ | not available -

TAU



Pediatric indication
Designed for use with pediatric patients



Keeping it mini
Lightweight and compact design simplifies transportation and storage



Connectivity
Easy access to the power button and I/O ports directly on top of the chassis



Bilateral controls
Improved functionality for the sterile field with back-lit controls



Surgical LED lights
Provide additional illumination on the anatomy



Flexibility
Increased orbital rotation of 160°, larger arc depth of 50.8 cm and improved umbilical cable

01 / The superior choice in imaging. Orthoscan TAU 2020

→ Bigger detector. Bigger possibilities.

At more than twice the size of the detectors found on conventional mini C-arms¹, Orthoscan TAU 2020 blurs the line between mini and full size. Confirm joint space with accuracy, see fractures in full view, and reduce dose by minimizing shots so you can work efficiently. Combined with pediatric indication, it is possible to image anatomy in ways never before possible on a mini C-arm.

→ Seamless collimation for the perfect shot

Introducing the industry's first stepless motorized collimator in a mini C-arm. With the touch of a finger, users can infinitely adjust via the touchscreen interface to minimize radiation exposure and reduce patient dose, while limiting the area of interest. Improved contrast and detail-rich images provide users a clear image for an accurate diagnosis.

→ Intelligent dose reduction

At Orthoscan, we understand your concern about radiation exposure and the demand for high-quality images. That's why the TAU family includes cutting-edge Intelligent Dose Reduction technology^{2,4} that provides the best in diagnostic image quality while reducing exposure to you and your patients.



PULSED FLUOROSCOPY

- Pulsed fluoroscopy at 30pps significantly reduces dose rate compared to conventional continuous fluoroscopy – without loss of image quality or detail
- Greater dose reduction with 15 or 7.5 pps



OPTIMIZED DOSE FILTER

- Only mini C-arm with pediatric indication
- Reduced dose while maintaining image quality
- Reduced exposure to surgeons and patients



NEXT GENERATION FLAT PANEL DETECTOR

- Increased workflow and efficiency
- Improved image brightness and quality
- Dose reduction and decreased ramp time



Hand imaging



Foot imaging



Elbow imaging

02 / Upgrade your expectations. Orthoscan TAU 1515

→ Capture more anatomy in one shot

With a 15 cm x 15 cm detector, Orthoscan TAU 1515 provides 25–33% larger surface area compared to conventional mini C-arms³. Keep your focus on the patient and not the equipment by achieving preferred views with fewer shots, improving your workflow and reducing exposure to you and your patients.

→ A mini C-arm that works with you, not against you

With an increased orbital rotation of 160°, a larger arc depth of 50.8 cm, and an integrated umbilical cable, Orthoscan TAU 1515 combines high versatility with increased articulation. Improve your workflow and efficiency with minimal adjustments, allowing you to effortlessly maneuver in the surgical field with just a turn of the wrist.

→ Intelligent dose reduction

At Orthoscan, we understand your concern about radiation exposure and the demand for high-quality images. That's why the TAU family includes cutting-edge Intelligent Dose Reduction technology^{2,4} that provides the best in diagnostic image quality while reducing exposure to you and your patients.



UP TO
79%
CUMULATIVE DOSE
REDUCTION CAN BE
ACHIEVED²



PULSED FLUOROSCOPY

- Pulsed fluoroscopy at 30pps significantly reduces dose rate compared to conventional continuous fluoroscopy – without loss of image quality or detail
- Greater dose reduction with 15 or 7.5pps



OPTIMIZED DOSE FILTER

- Only mini C-arm with pediatric indication
- Reduced dose while maintaining image quality
- Reduced exposure to surgeons and patients



NEXT GENERATION FLAT PANEL DETECTOR

- Increased workflow and efficiency
- Improved image brightness and quality
- Dose reduction and decreased ramp time



Hand imaging



Foot imaging



Elbow imaging

03/Exceptional imaging begins here. Orthoscan TAU 1512

→ A mini C-arm that works with you, not against you

An expanded orbital rotation of 160° allows preferred views of anatomy to be obtained without causing patient discomfort. Whether you're imaging children or adults, a 50.8cm arc depth provides the necessary space to position patients of all sizes. Get all the flexibility you need with an improved umbilical cable, allowing you to easily maneuver the C-arm in the surgical field. Combined, these features simplify and improve your workflow.

→ Big capability, small size

Lighter and smaller than competitive equipment, Orthoscan's TAU family is keeping the mini C-arm mini. While in compact mode, storage and maneuvering through restrictive spaces is effortless, and a 3-way braking system provides mobility and stability during positioning.

→ Intelligent dose reduction

At Orthoscan, we understand your concern about radiation exposure and the demand for high-quality images. That's why the TAU family includes cutting-edge Intelligent Dose Reduction technology^{2,4} that provides the best in diagnostic image quality while reducing exposure to you and your patients.



UP TO
66%
CUMULATIVE DOSE
REDUCTION CAN BE
ACHIEVED⁴



OPTIMIZED DOSE FILTER

- Only mini C-arm with pediatric indication
- Reduced dose while maintaining image quality
- Reduced exposure to surgeons and patients



NEXT GENERATION FLAT PANEL DETECTOR

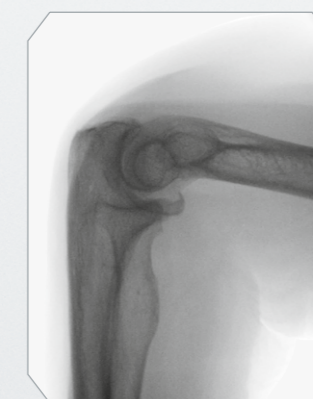
- Increased workflow and efficiency
- Improved image brightness and quality
- Dose reduction and decreased ramp time
- Mag Mode maintains image quality without dose increase



Hand imaging



Foot imaging



Elbow imaging

04/Portable digital imaging. Orthoscan Mobile DI

→ Mobile extremity imaging

Designed for the office and clinic, Mobile DI is a 15.9 kg self-contained portable mini C-arm capable of digital imaging and fluoroscopy. Mobile DI has a very small footprint with enhanced features for users and patients to view clinical images in real time.

→ Mobile accessory cart

Transport your Mobile DI between exam rooms with the optional Mobile DI Accessory Cart. Whether in standing or sitting position, this defining accessory allows you to reposition the detector and monitor with ease. With improved articulation to the monitor arm, view real-time results with your patients on a detail-rich display without needing to adjust.

→ Advanced touch-screen interface

The advanced Orthotouch™ user interface allows seamless operation of system controls while still supporting keyboard functions. Orthotouch™ provides a familiar experience – similar to a smartphone or tablet – that enhances interaction while viewing detailed anatomy.



Mobile DI desktop setup



Mobile DI on the accessory cart

CLINICAL & OFF-SITE EXTREMITY IMAGING

- Dynamic views
- Fluoroscopic guided injections
- Radiologic examinations
- Stress views
- Pin removals
- Closed reductions
- Motion studies
- Joint stability tests
- Arthrography

MAINTAIN CLINICAL EXCELLENCE WITH THESE ACCESSORY OPTIONS

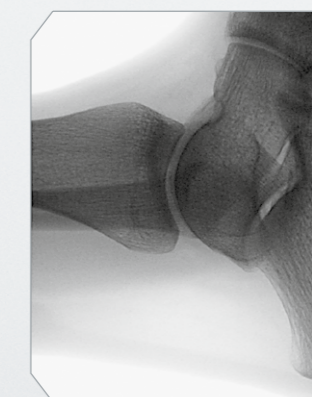
- Weight-bearing foot bench
- Custom covers and drapes
- Wheeled storage case



Hand imaging



Foot imaging



Ankle imaging

Do more. Dose less.

We care about our customers' concerns and feedback, which leads us to push advancements in dose reduction, mechanical design and image quality, while providing high-quality products to the global medical community.

Our passionate pursuit of craftsmanship paired with exceptional performance is why Orthoscan is the global leader in mini C-arm imaging.



Exceptional diagnostic imagery with the advanced TAU 2020 mini C-arm.



Orthoscan EMEA Service Center

Since 2017 Ziehm Imaging has had full distribution rights for the Orthoscan mini C-arms and is the official Sales and Service representative for these products in Europe, the Middle East and Africa.

Rely on Ziehm Imaging for flexible and fast service to stay at the cutting edge of technology. Tailored service packages and individual upgrade paths keep you competitive in your daily hospital routine.

Offices

- 1. **Nuremberg (Germany)**
- 2. Massy (France)
- 3. Valencia (Spain)
- 4. Reggio Emilia (Italy)
- 5. Tulln an der Donau (Austria)
- 6. Kerava (Finland)
- 7. Dubai (UAE)
- 8. Sandton (South Africa)



Orthoscan and Orthotouch are registered trademarks of Ziehm-Orthoscan, Inc.

¹ Compared to 12 cm x 15 cm detectors.

² Using Intelligent Dose Reduction (with Optimized Dose Filter) when compared to Orthoscan 1000-0004-FD. In clinical practice, the use of IDR may reduce patient dose depending on the clinical task, patient size, anatomical location, and clinical practice. A consultation with a radiologist and a physicist should be made to determine the appropriate dose to obtain diagnostic image quality for the particular clinical task.

³ Compared to 12 cm x 15 cm detectors and 13 cm x 13 cm detectors.

⁴ Using Intelligent Dose Reduction (with Optimized Dose Filter) when compared to Orthoscan 1000-0004. In continuous mode, users will not attain the stated levels of cumulative dose reduction possible with that offered in pulsed fluoroscopy. In clinical practice, the use of IDR may reduce patient dose depending on the clinical task, patient size, anatomical location, and clinical practice. A consultation with a radiologist and a physicist should be made to determine the appropriate dose to obtain diagnostic image quality for the particular clinical task.

HEADQUARTERS

Germany

Ziehm Imaging GmbH
Lina-Ammon-Strasse 10
90471 Nuremberg, Germany
Phone +49 911 660 67 0
Fax +49 911 660 67 390
info@ziehm.com

Austria

Ziehm Imaging Austria GmbH
Ziegelfeldstrasse 10
3430 Tulln an der Donau,
Austria
Phone +43 2272 66441
austria@ziehm.com

Italy

Ziehm Imaging Srl
Via Paolo Borsellino, 22/24
42124 Reggio Emilia, Italy
Phone +39 05 22 61 08 94
Fax +39 05 22 61 24 77
italy@ziehm.com

South Africa

Ziehm Imaging SA (Pty) Ltd
Cnr Carey & 5th Streets
2090 Wynberg
Sandton, South Africa
craig.loser@ziehm-sa.co.za
Phone +27 113 14 31 08
Fax +27 113 14 33 54

Spain

Ziehm Imaging Spain SLU
Calle Oller 13, locales 15 y 16
Parque Empresarial Táctica
46980 Paterna (Valencia), Spain
Phone +34 960 911 152
spain@ziehm.com

France

Ziehm Imaging S.A.R.L.
2, rue du chemin des Femmes
91300 Massy, France
Phone +33 1 69 07 16 65
Fax +33 1 69 07 16 96
france@ziehm.com

Finland

Ziehm Imaging Oy
Kumitehtaankatu 5
04260 Kerava, Finland
Phone +358 4 49 75 75 37
finland@ziehm.com

Dubai

Ziehm Imaging
Middle East Trading L.L.C
The Regal Tower, Unit 3202
Al Mustaqbal St. Business Bay
P.O. Box 94706
Dubai, United Arab Emirates
Phone +971 55 79 98 370
Phone +971 58 27 55 811
info@ziehm.com